

# IKON

Brindleyplace, Birmingham

## Venue Hire Corporate Hospitality





# About Ikon

Ikon is one of Europe's leading contemporary art galleries. Situated in a former Victorian school in the heart of Birmingham, it is one of the most impressive buildings in the city and a unique venue for events. With an award-winning modern conversion, Ikon Gallery offers a stunning combination of old and new.

From its beginnings in 1964 in a small kiosk in Birmingham's Bullring, to its current home in the thriving canalside location of Brindleyplace, Ikon's reputation for internationalism and artistic excellence has continued to be a major part of Birmingham's cultural landscape.

With versatile spaces for up to 500 guests, we can help tailor any event to meet your requirements. Our team will help every step of the way and are able to arrange catering, lighting, sound, projection and presentation facilities to help ensure your event is a success.

Ikon is a charity and by choosing us for your event you will directly support the gallery's future. For more information:

Visit: [www.ikon-gallery.org/venuehire](http://www.ikon-gallery.org/venuehire)  
Call: 0121 248 0708  
Email: [hire@ikon-gallery.org](mailto:hire@ikon-gallery.org)

**IKON**



# Location

*Another triumph for the Ikon, one of the best galleries in the country.*  
*Bernadette McNulty, The Telegraph*

Located within easy walking distance of New Street Station and Grand Central, in the prestigious Brindleyplace, Ikon is situated in a prime location in the heart of the city centre.

Ikon stands as the focal point of Oozells Square and the Grade II listed gallery is surrounded by major businesses, restaurants and a number of luxury hotels and serviced apartments, with accommodation to suit all needs. Ikon has partnered with Hilton Garden Inn Brindleyplace to offer visitors an exclusive discount rate. For reservations visit [Hilton Garden Inn](#), select 'More Options', then 'Add Special Rate Codes' and enter the corporate code N2771505 in 'Corporate Account'.

Short distances from the gallery are the world-class International Convention Centre, Symphony Hall and Barclaycard Arena.

**IKON**



# Galleries

Ikon has two gallery floors available for hire, either separately or combined, offering a unique, inspiring environment for special events – both are bright and spacious, with high ceilings and attractive architecture. Ikon's exhibitions showcase the very best in contemporary art from around the world and provide an ever-changing backdrop for events.

*Thank you to everyone at Ikon for hosting our event and making us feel so welcome. It was a great night and the gallery looked gorgeous. It really is a great venue for events.*

*Louise Henry, Head of Events, The London Evening Standard, The Independent and i.*

The flexibility offered by the galleries make them ideal for all occasions including: canapé receptions, dinners, product launches, awards ceremonies, photo shoots and wedding receptions.

Both galleries are available to hire all day on Mondays and from 5pm on other days.

## Single Gallery

Capacity guide – 250 standing / 100 seated

Standard hire – £1,250 +VAT

Day rate (Mondays only) – £2,000 +VAT

## Double Gallery

Capacity guide – 500 standing / 200 seated

Standard hire – £2,200 +VAT

Day rate (Mondays only) – £2,500 +VAT

# Events Room

Ikon's Events Room is an ideal space for smaller, more intimate, events. With large windows and a projector and Wi-Fi as standard, our Events Room can host workshops, seminars, meetings, presentations and drinks receptions. It has a capacity of up to 60 people, and is available every day.

## Events Room

Capacity guide – 60 standing / 45 seated

Full day – £475 +VAT

Half day – £325 +VAT



# Meeting Room

The Meeting Room is a modern boardroom with architectural features and an abundance of natural light – perfect for meetings, interviews and training sessions, with complimentary internet access and a large LCD screen. It accommodates up to 12 people and is available every day.

## Meeting Room

Capacity guide – 12 seated

Full day – £200 +VAT

Half day – £125 +VAT





# Catering

*Top 10 inspirational indies to eat*  
[Guardian Travel 2015](#)

*Voted Birmingham's 'Local Gem'*  
[Good Food Guide 2016](#)

**IKON**

Café Opus at Ikon has a unique offering for all styles of events from exclusive dinners and drinks receptions in the galleries to afternoon tea. The changing menus embrace seasonal flavours and locally sourced ingredients with over 90% of produce coming from British farms.

Choose Ikon to host large celebrations and launch receptions with canapés and champagne or delicious bowl food served by the friendly Opus staff. For your business presentation or staff away day, artisan sandwich platters, teas and coffees can be served for your guests directly to our Meeting Room or Events Room or in the café itself.

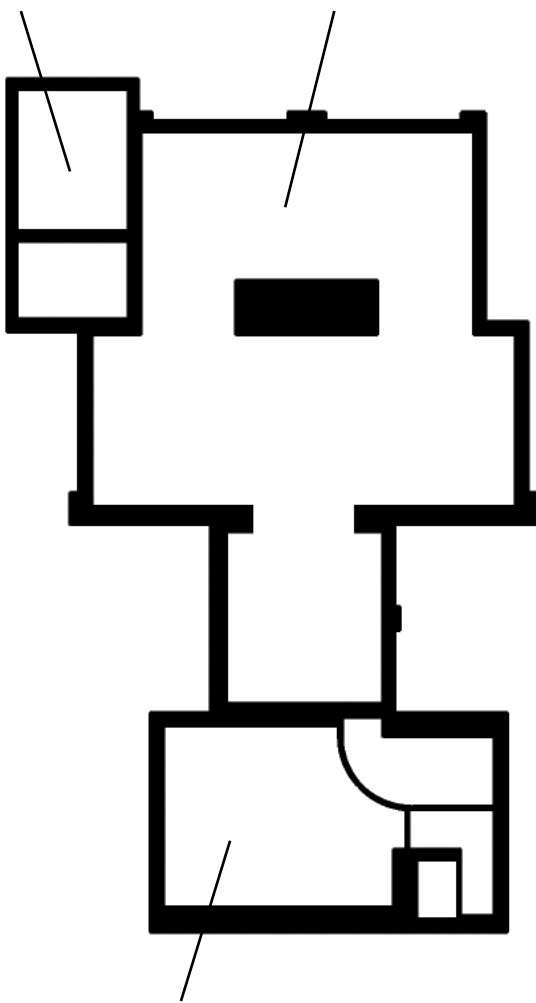
Please note that 5% of everything you purchase from Café Opus goes to support Ikon. Alternative catering can be used, subject to agreement with Ikon.

# Floor plans

## First Floor

**Meeting Room**  
Capacity 12, 22 m<sup>2</sup>

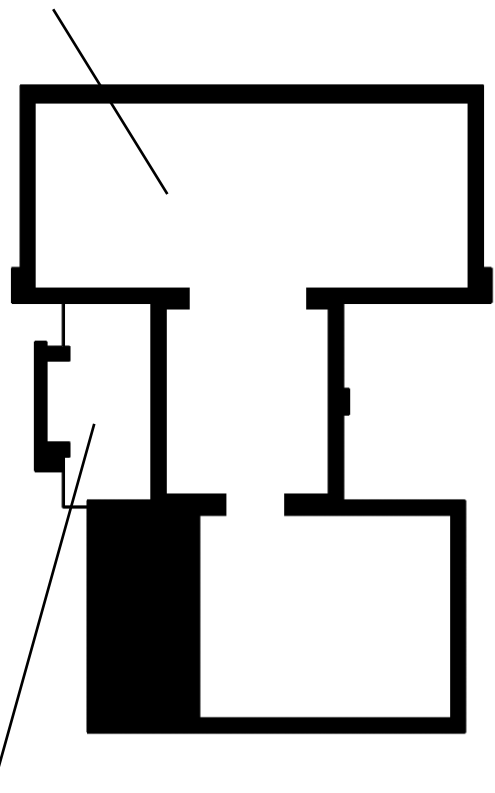
**First Floor Gallery**  
Capacity 250 standing,  
100 seated, 213 m<sup>2</sup>



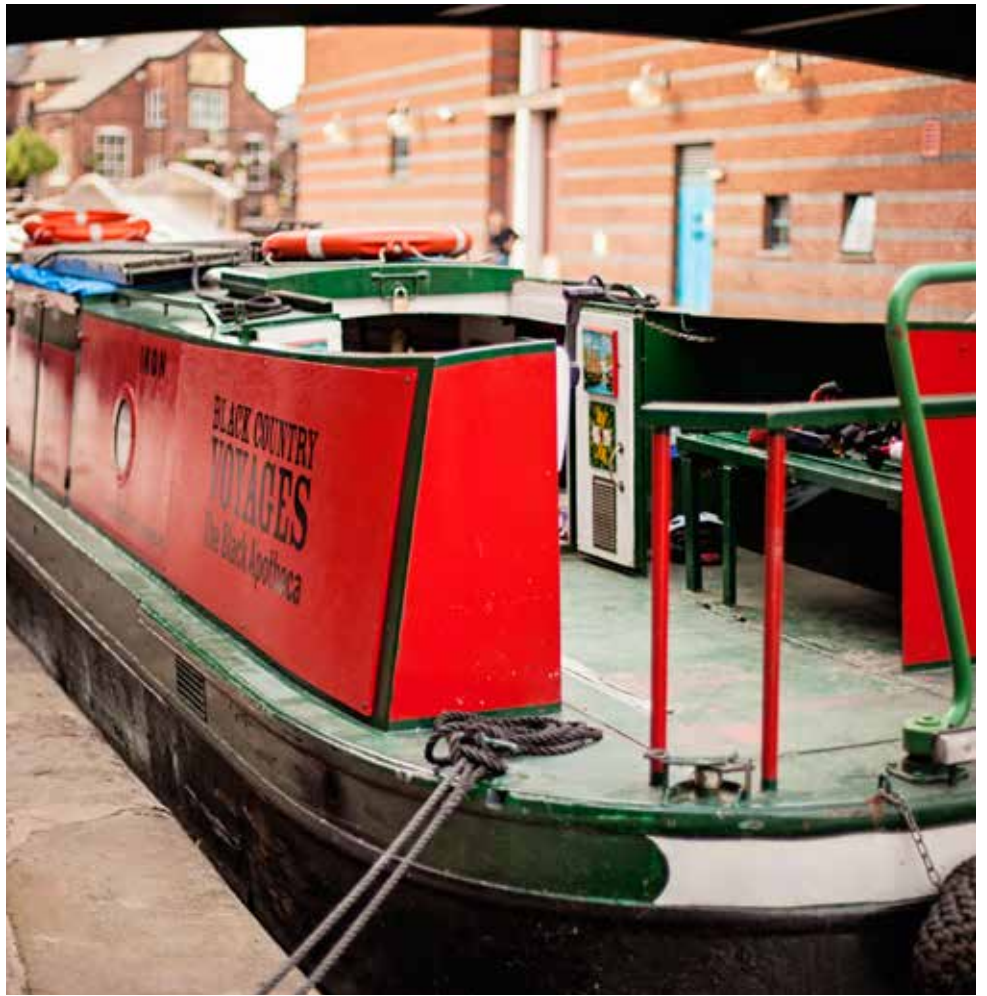
**Events Room**  
Capacity 60 standing, 45 seated, 58m<sup>2</sup>

## Second Floor

**Second Floor Gallery**  
Capacity 250 standing,  
100 seated, 228 m<sup>2</sup>



**Resource Room**



# Staff Away Days

**IKON**

Ikon offers inspiring and creative workshops tailored to meet your needs. Aside from our flexible spaces within the gallery, groups can hire Ikon's canal boat and take part in creative workshops while enjoying Birmingham's famous waterways.

We can design a package that will engage and motivate your staff, encourage creative thinking and be both fun and informative. Through practical and imaginative activities, often reflecting Ikon's current exhibitions, your staff will learn all about the connection between creative, innovative thinking and making effective business decisions.





# Support Ikon

*Ikon was the perfect location for our event. The gallery was beautiful and the Ikon staff took very good care of us. The venue was exactly what we needed and the catering was delicious and very good value. It was brilliant to know that our conversations were also taking place in a space that's taking its environmental commitments seriously, and we wouldn't hesitate to come back.*  
*Sholeh Johnston, Head of Creative Programmes, Julie's Bicycle*

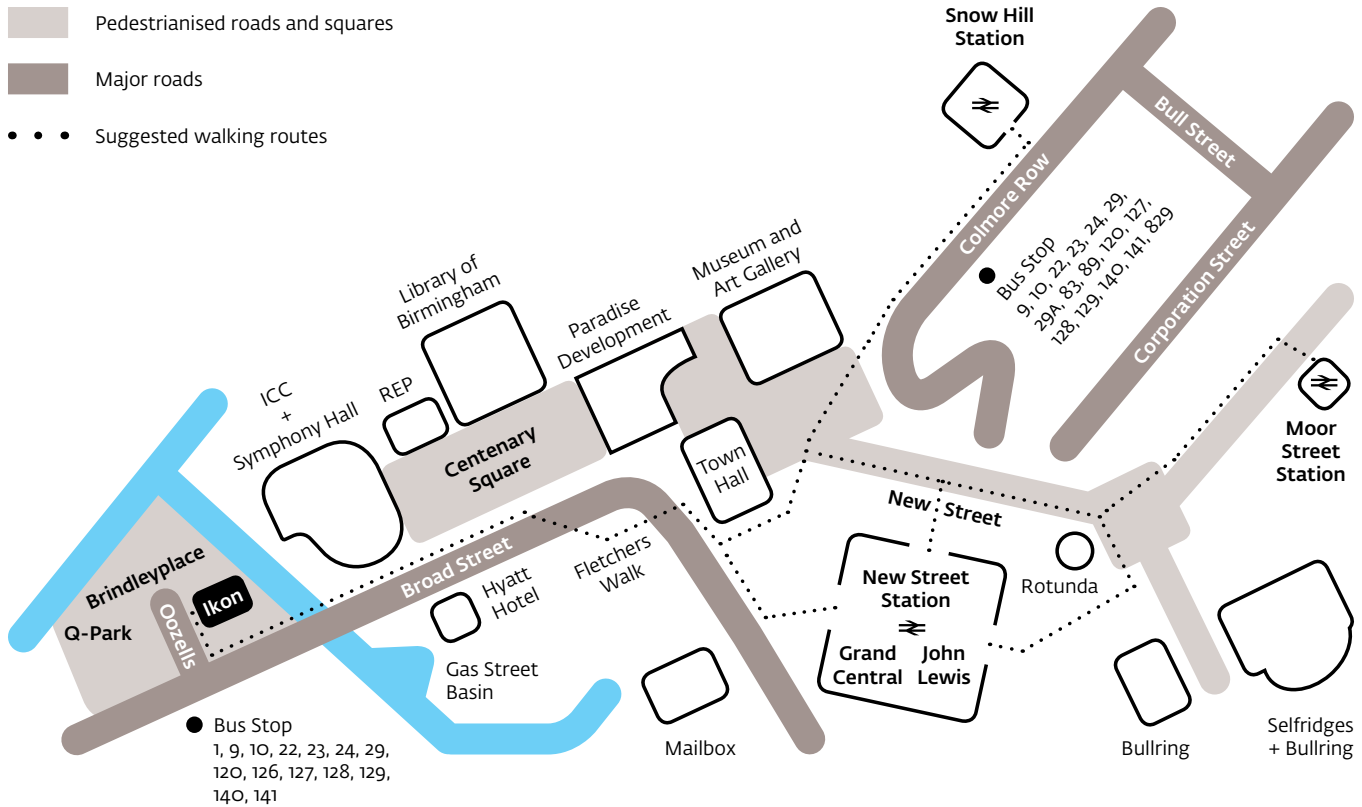
Our corporate partners benefit from an association with an internationally renowned gallery. Ikon is a charity and their support is essential to our work, including our education programme, community projects and exhibitions.

Working in partnership with Ikon enables you to increase brand awareness, access networking opportunities, entertain important clients and meet CSR targets. Amongst other benefits Corporate Patrons of Ikon receive free and discounted venue hire.

To find out more about sponsorship opportunities and corporate partnership packages please get in touch.

Visit: [www.ikon-gallery.org/venuehire](http://www.ikon-gallery.org/venuehire)  
Call: 0121 248 0708  
Email: [hire@ikon-gallery.org](mailto:hire@ikon-gallery.org)

**IKON**



**Ikon Gallery**  
**1 Oozells Square, Brindleyplace,**  
**Birmingham B1 2HS**  
**+44 (0) 121 248 0708**  
**[www.ikon-gallery.org](http://www.ikon-gallery.org)**  
[www.twitter.com/ikongallery](http://www.twitter.com/ikongallery)  
[www.facebook.com/ikongallery](http://www.facebook.com/ikongallery)

**Open Tuesday – Sunday, 11am–5pm**  
**Free entry**

Ikon Gallery Limited trading as Ikon.  
 Registered charity no. 528892. Ikon is supported by Arts Council England and Birmingham City Council.

**Pedestrian route from Birmingham New Street train station**

From New Street station walk to Victoria Square, past the side of Town Hall, through Fletcher's Walk and into Broad Street. Pass the Hyatt Hotel on the left, then turn right into Oozells Street. This walk takes approximately 15 minutes.

**By road**

Birmingham is accessible by the M5, M6, M40 and M42 motorways. Drivers should follow signs to Birmingham City Centre then look for the brown tourist signs to the International Convention Centre, Barclaycard Arena, canals and Brindleyplace.

**Car and bicycle parking**

The nearest car park is Q-Park Brindleyplace on Brunswick Street (pre-book and quote IKON for 10% discount at [www.q-park.co.uk/parking/birmingham/q-park-brindleyplace](http://www.q-park.co.uk/parking/birmingham/q-park-brindleyplace)). Orange and blue badge holders may park on the double yellow lines on Oozells Street in accordance with badge guidelines. There is a bicycle rack near Ikon.